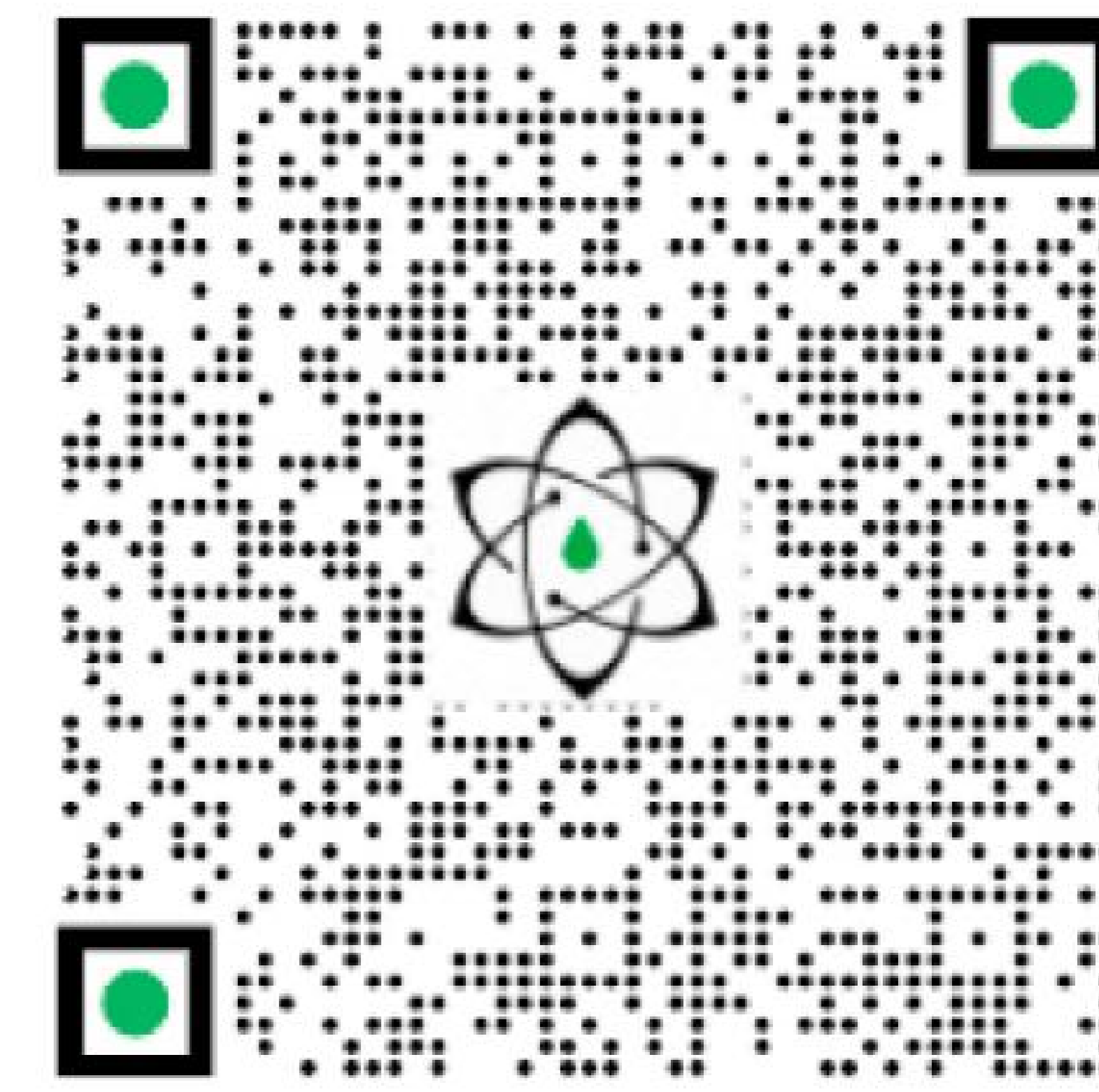


# TECHNICAL REPORT

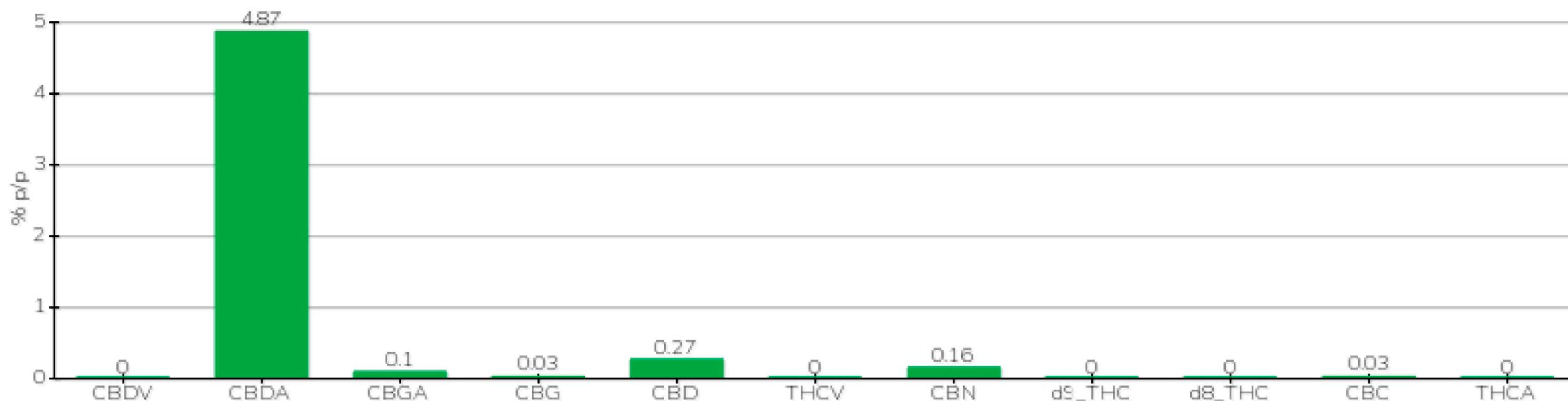


<b>Committente</b>	GREEN VALLEY SOCIETÀ AGRICOLA A.R. L.	<b>Etichetta</b>	Enectaliana
<b>Data accettazione</b>	03.05.2023	<b>Tipologia campione</b>	infiorescenza
<b>Data analisi</b>	05.05.2023	<b>varietà</b>	NA
<b>Codice riferimento interno</b>	RES0922.5	<b>N. Cartellino</b>	NA
<b>Metodica analitica</b>	HPLC - HS - Rev.2	<b>Campionamento</b>	a cura del cliente
<b>Lotto</b>	GVMFIN0EU22		

## Note

Parametro	% p/p	Metodo
CBDV	<0.01%	HPLC-UV
CBDA	4.87%	HPLC-UV
CBGA	0.10%	HPLC-UV
CBG	< 0.03%	HPLC-UV
CBD	0.27%	HPLC-UV
THCV	0.00%	HPLC-UV
CBN	0.16%	HPLC-UV
d9_THC	0.00%	HPLC-UV
d8_THC	0.00%	HPLC-UV
CBC	0.03%	HPLC-UV
THCA	0.00%	HPLC-UV
<b>CBD TOTALE</b>	<b>4.54%</b>	<b>CALCOLATO</b>
<b>CBG TOTALE</b>	<b>0.09%</b>	<b>CALCOLATO</b>
<b>THC TOTALE</b>	<b>0.00%</b>	<b>CALCOLATO</b>

CAMPIONE ANALIZZATO: Enectaliana(5.00gr)



Pineto